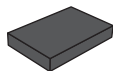


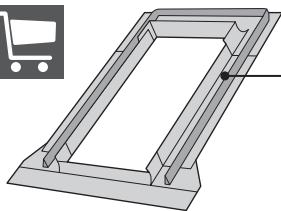
# ROOF WINDOW

**FR** Fenêtre de toit • **DE** Dachfenster • **DK** Ovenlysvindue  
**NL** Dakvenster • **IT** Finestra per tetti • **HU** Tetőtéri ablak  
**SK** Strešné okná • **PL** Okno dachowe • **RO** Ferestre de mansarda  
**CZ** Střešní okna • **SI** Strešno okno • **HR** Krovni prozor

**AAY B1500**  
**APY B1500**

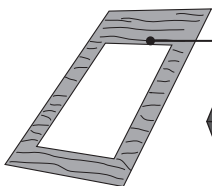


**TFX, SFX,**  
**UFX, UCX,**  
**SFF, TFP,**  
**UBX, SCX,**  
**LSX, SSX,**  
**FTX, FCX,**  
**SSC**



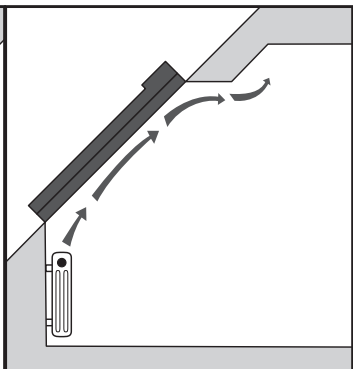
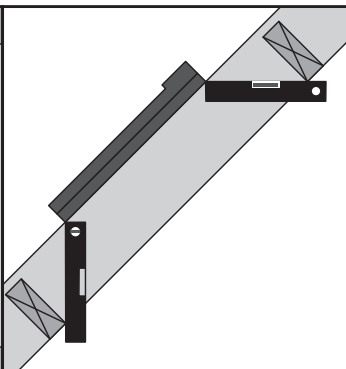
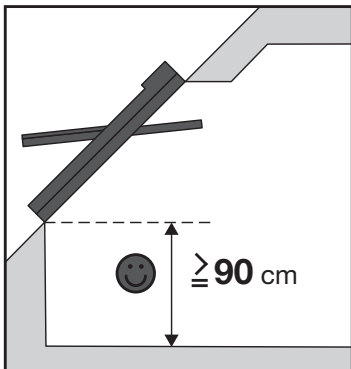
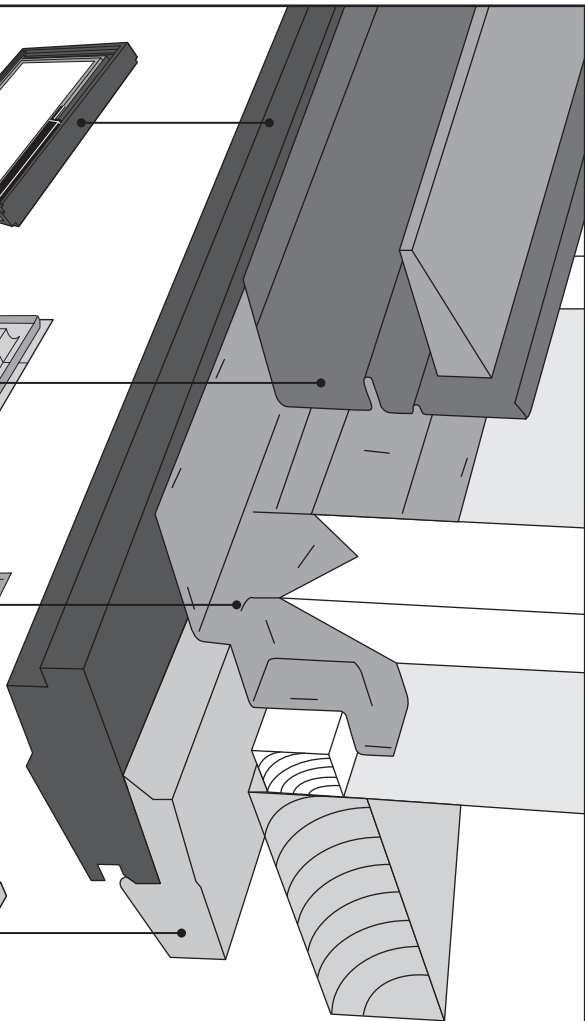
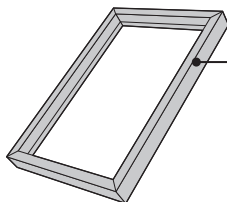
**RUC**

AAY B1500  
APY B1500

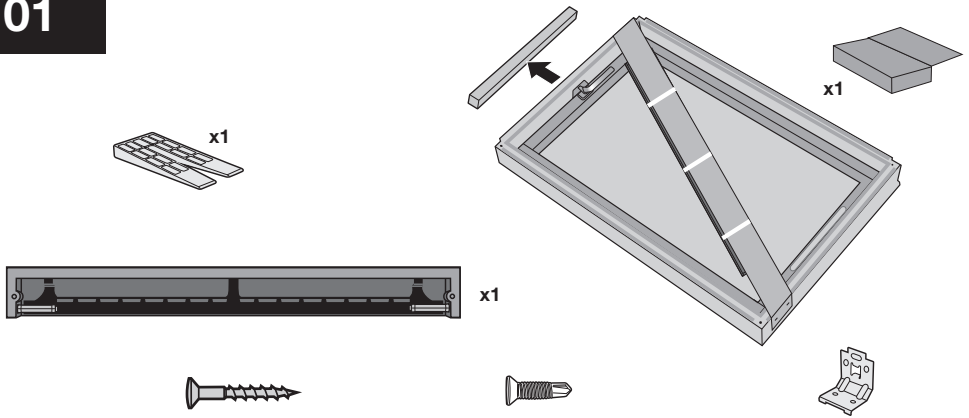


**IFC**

AAY B1500  
APY B1500



# 01



x18: C2A, C4A, F6A, M4A, M6A  
x27: M8A, M8A, S6A

Ø

x4: C2A, C4A, F6A, M4A, M6A  
x6: M8A  
x5: S6A



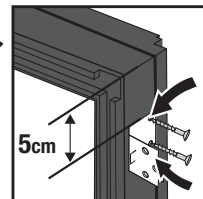
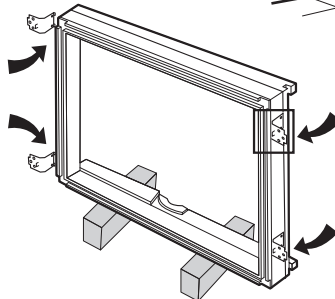
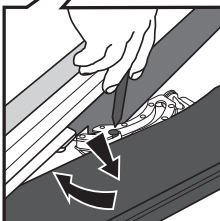
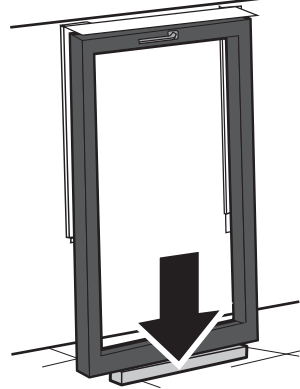
x18: C2A, C4A, F6A, M4A, M6A, M8A, S6A

x10: C2A, C4A, F6A, M4A, M6A  
x14: M8A  
x12: S6A

# 02



# 03





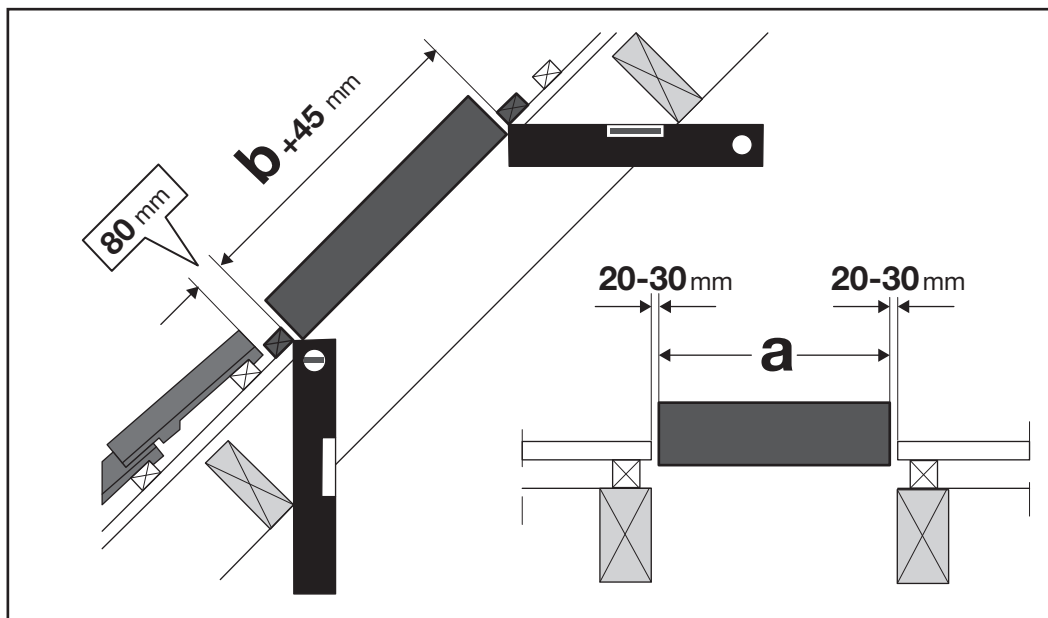
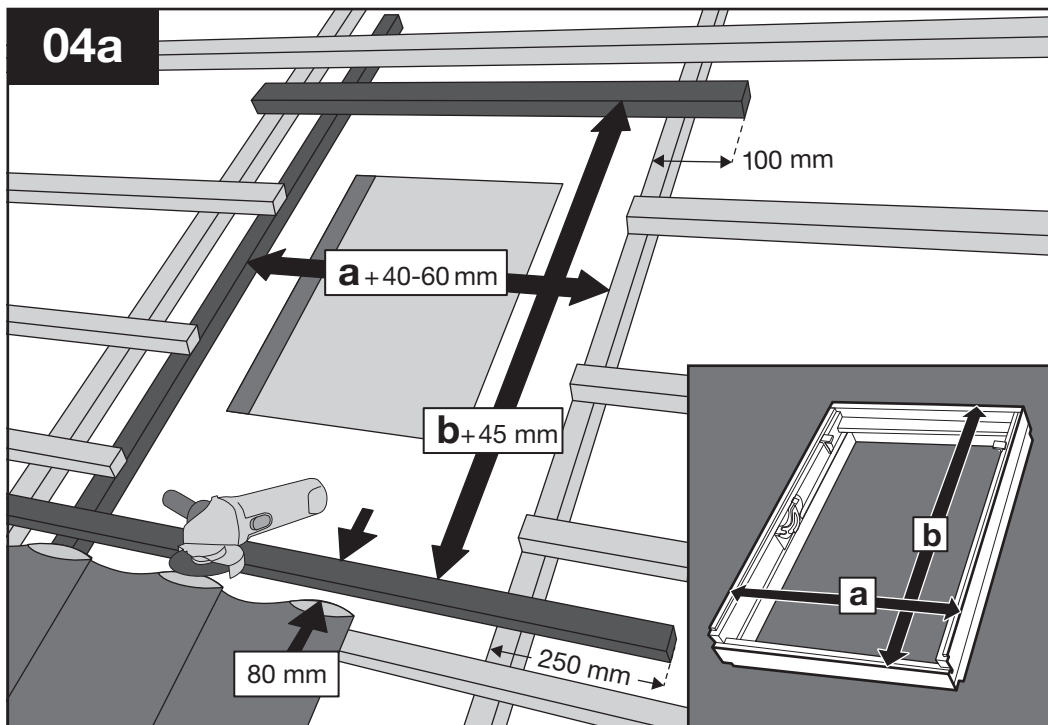
16-120 mm



16-50 mm

# TFX, UFX

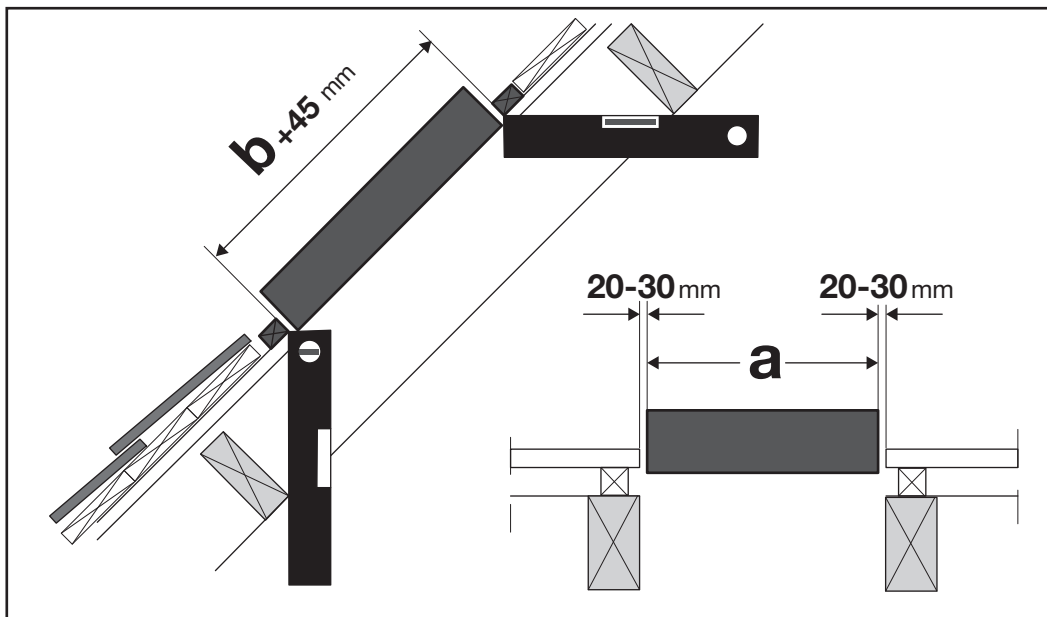
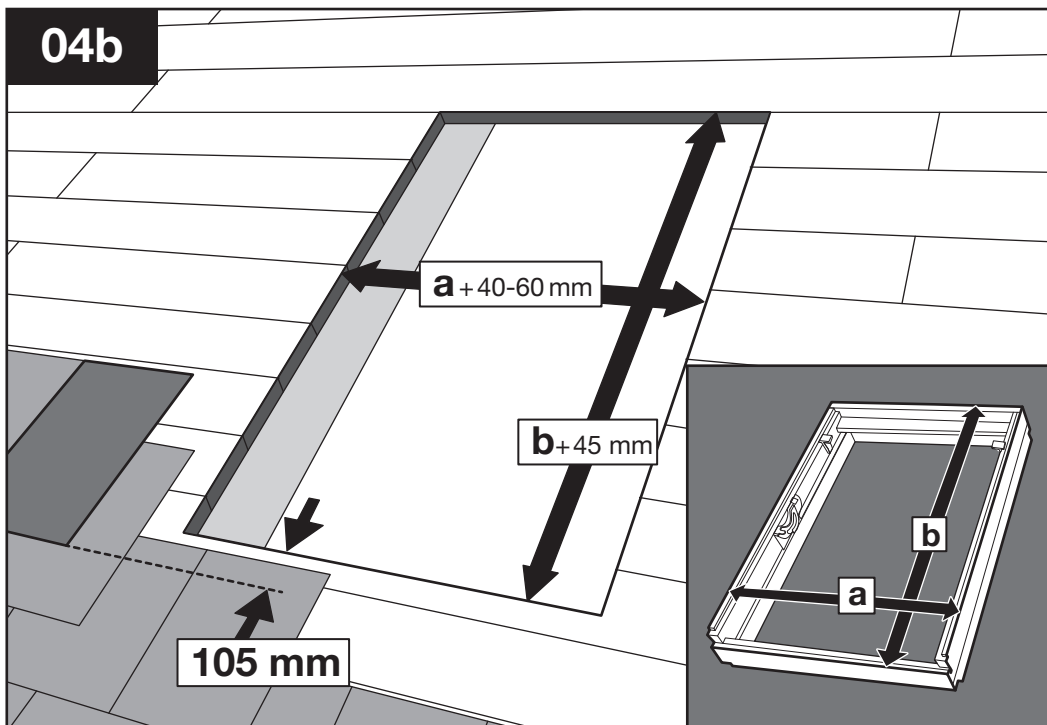
## 04a



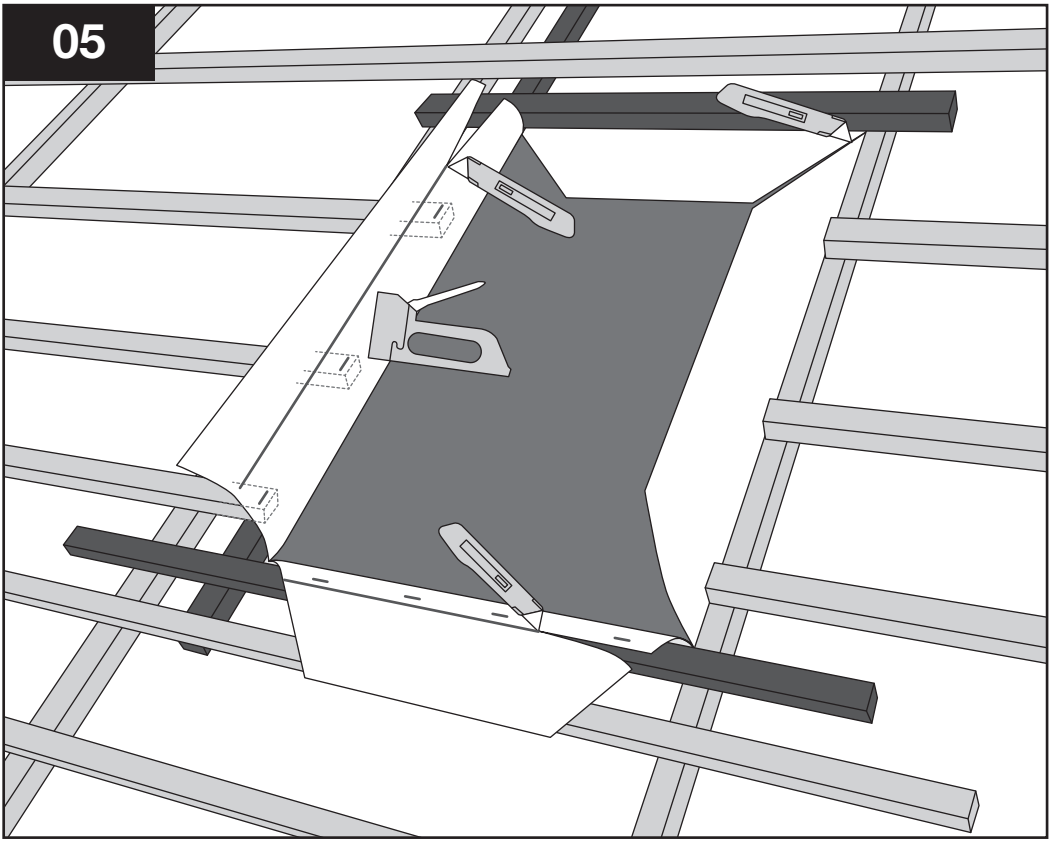


# SFX, LSX

## 04b

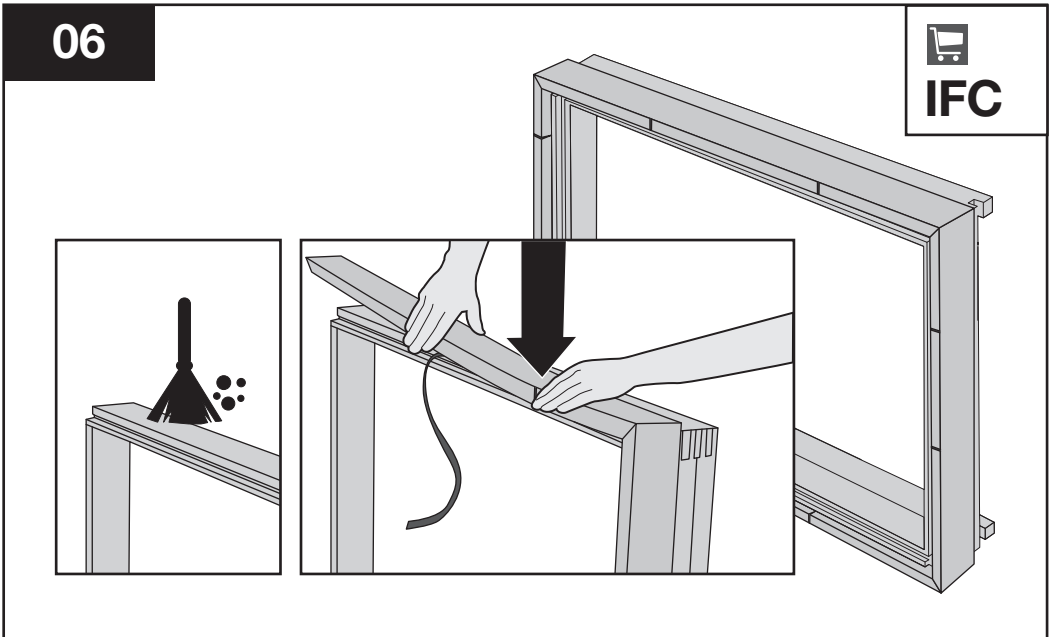


05

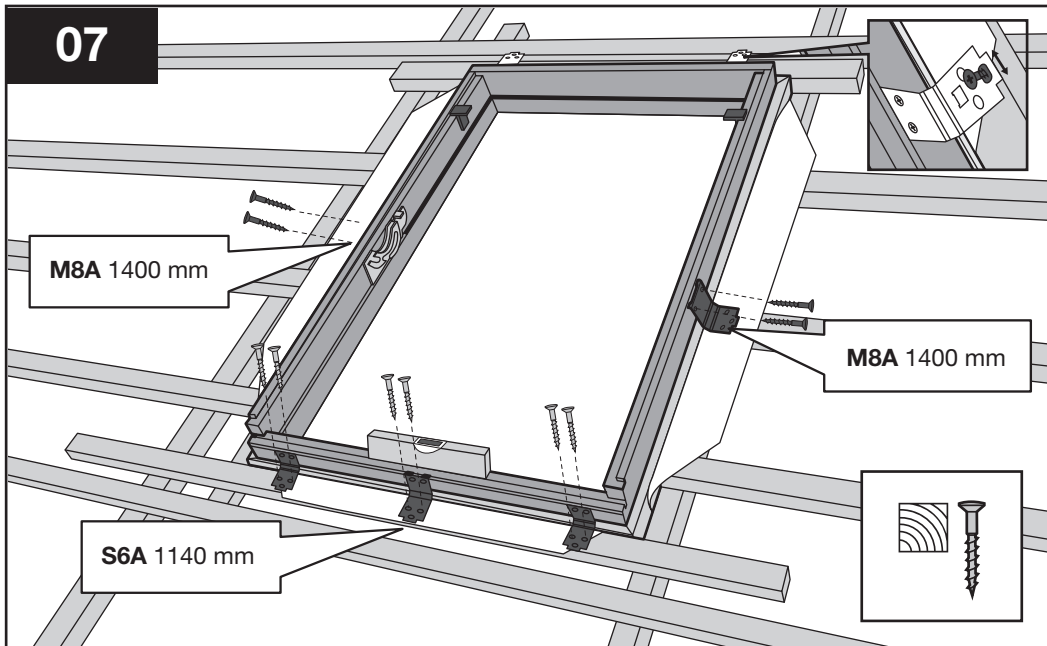


06

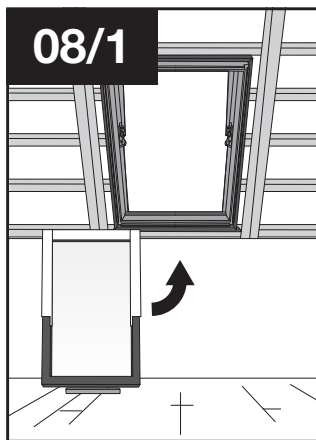
  
**IFC**



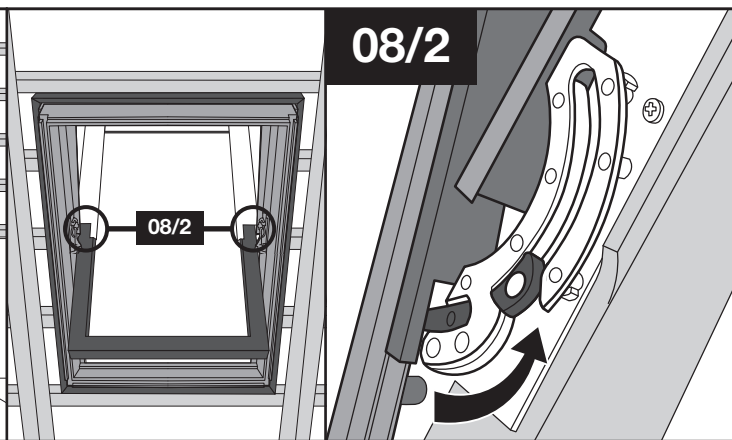
07



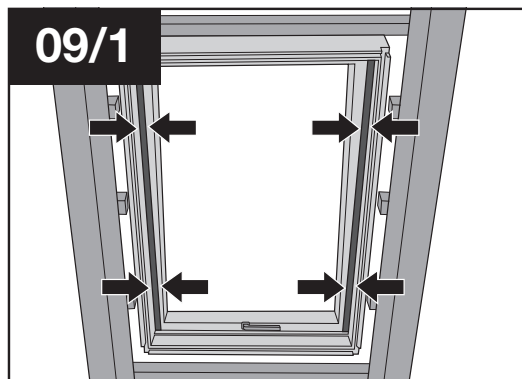
08/1



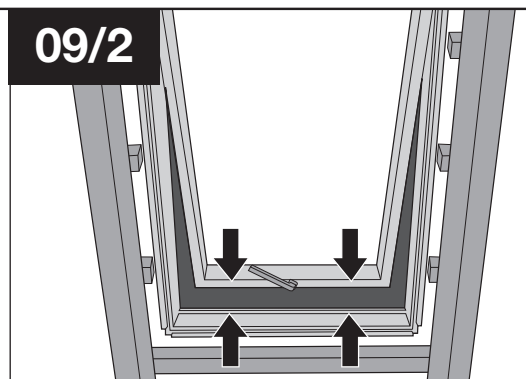
08/2



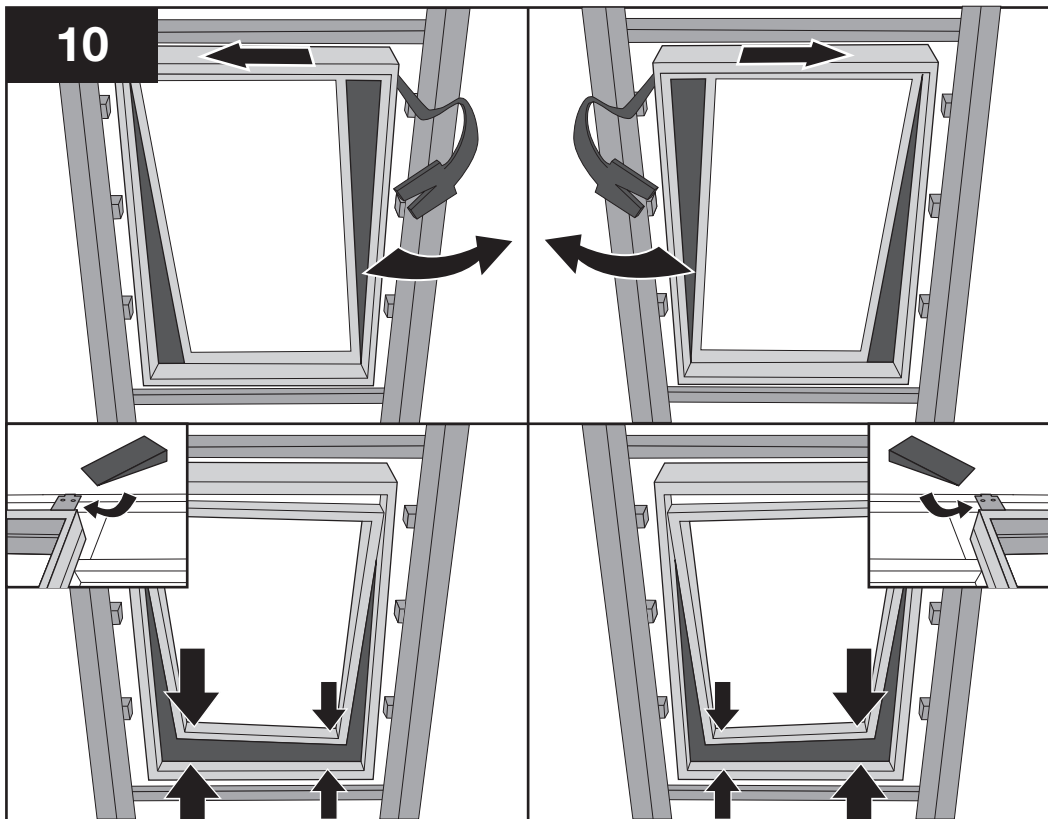
09/1



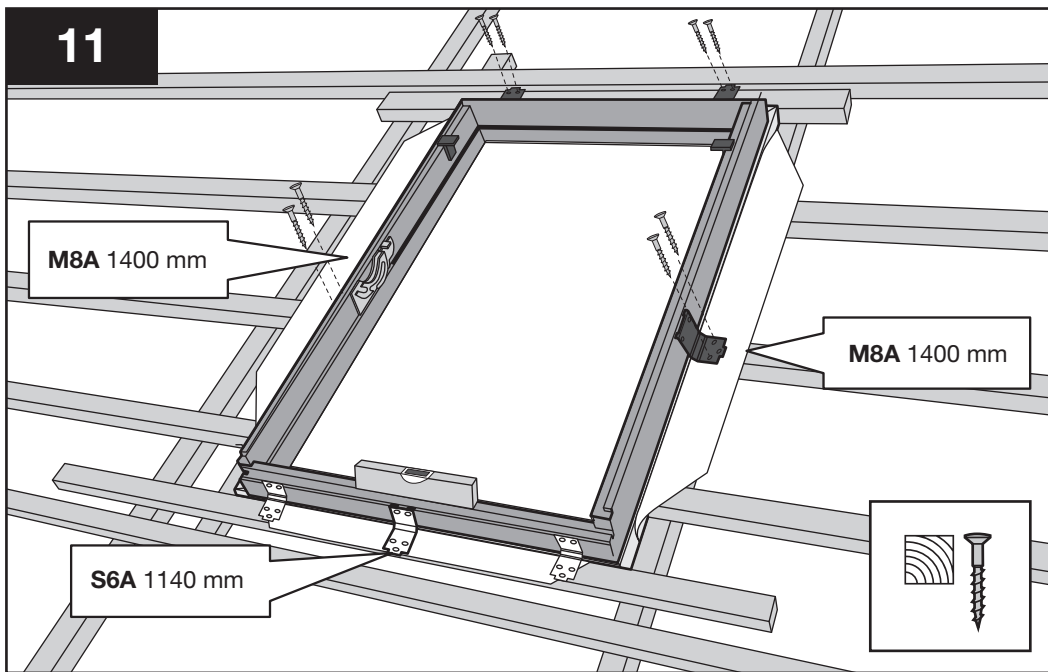
09/2



10

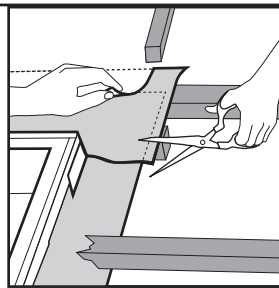
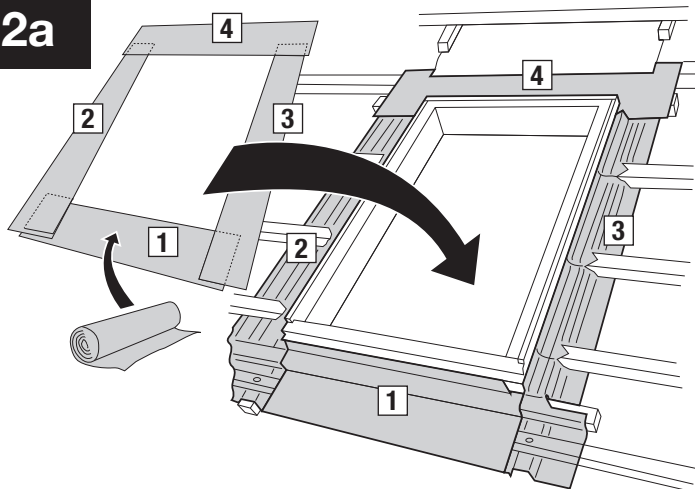


11

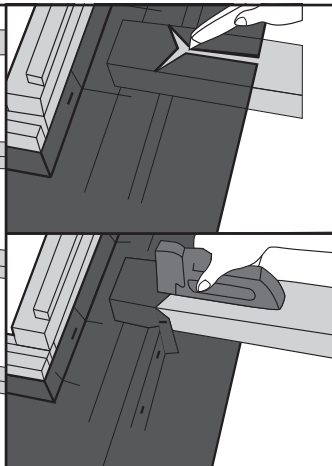
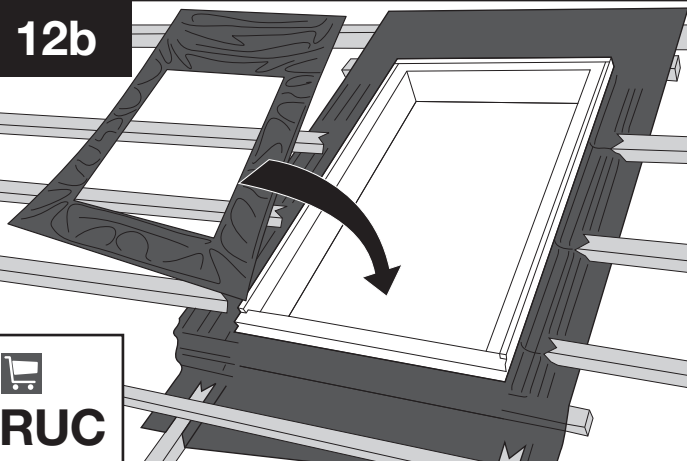




12a

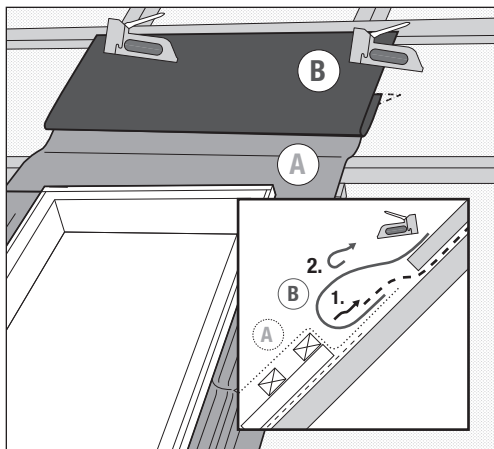
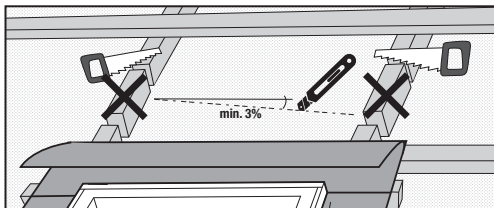
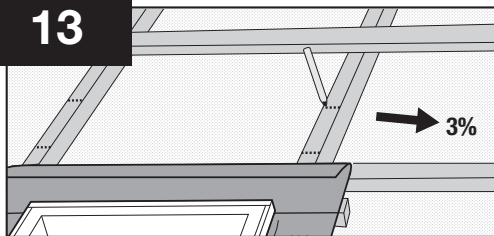


12b

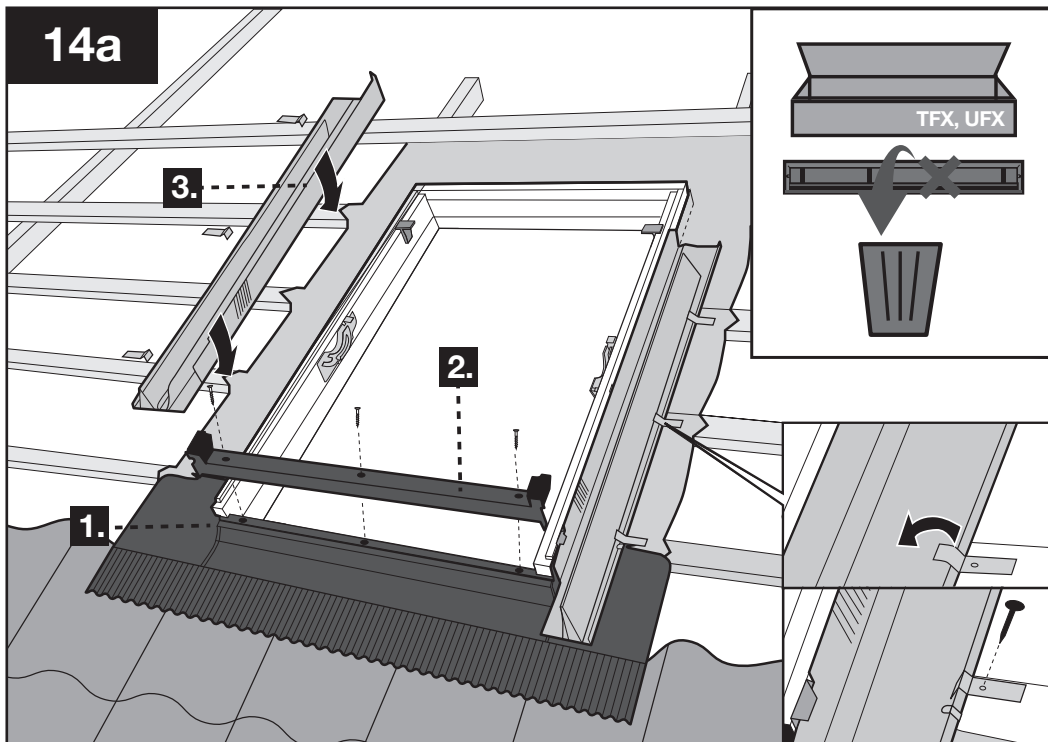


  
RUC

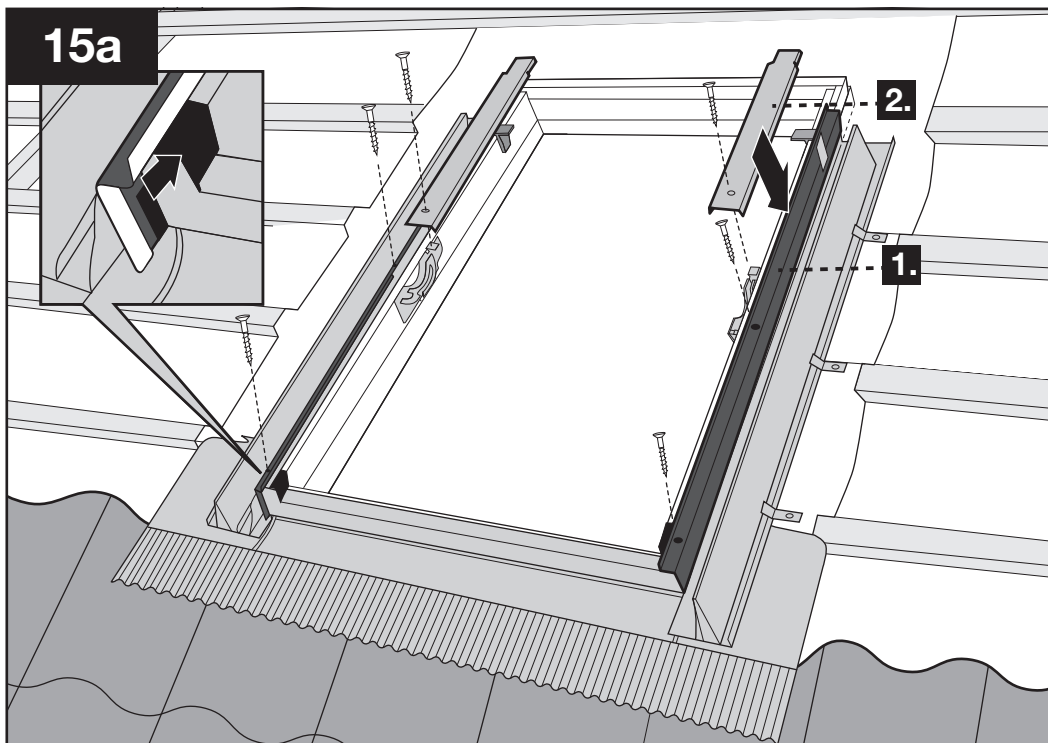
13



14a



15a

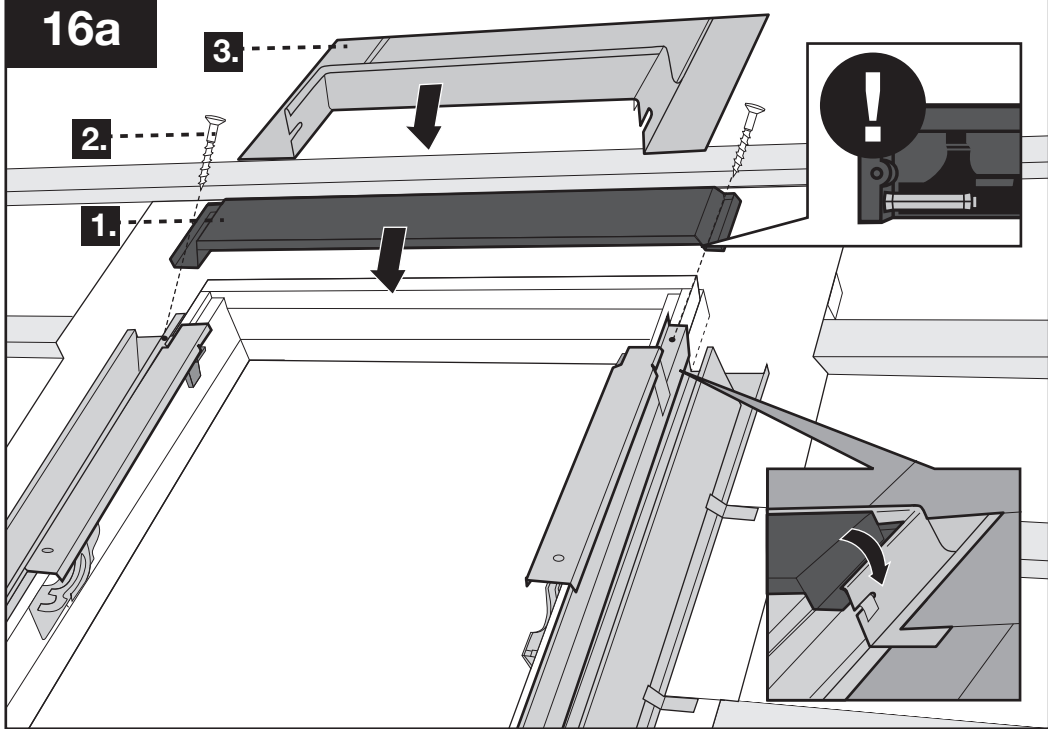


16a

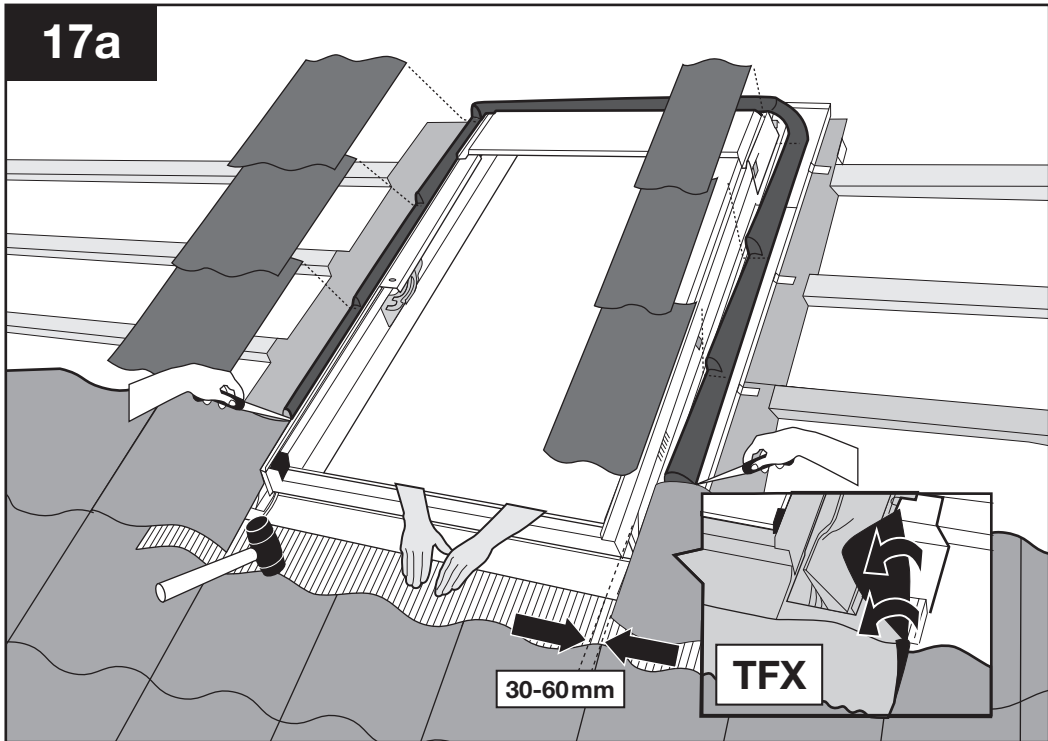
3.

2.

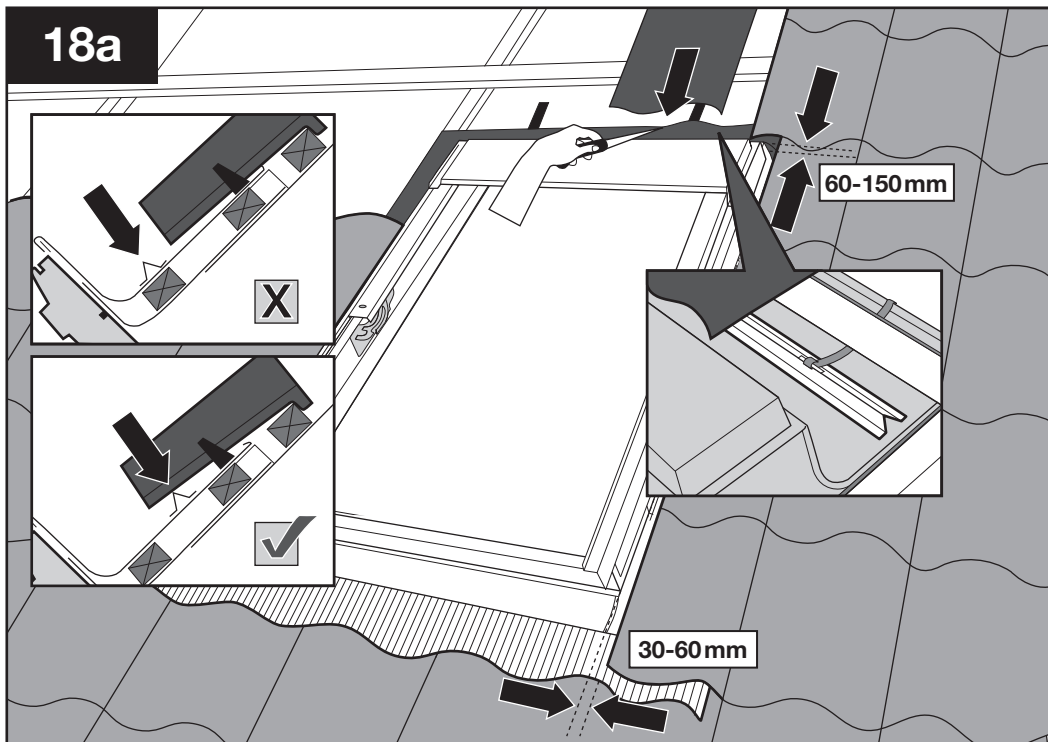
1.



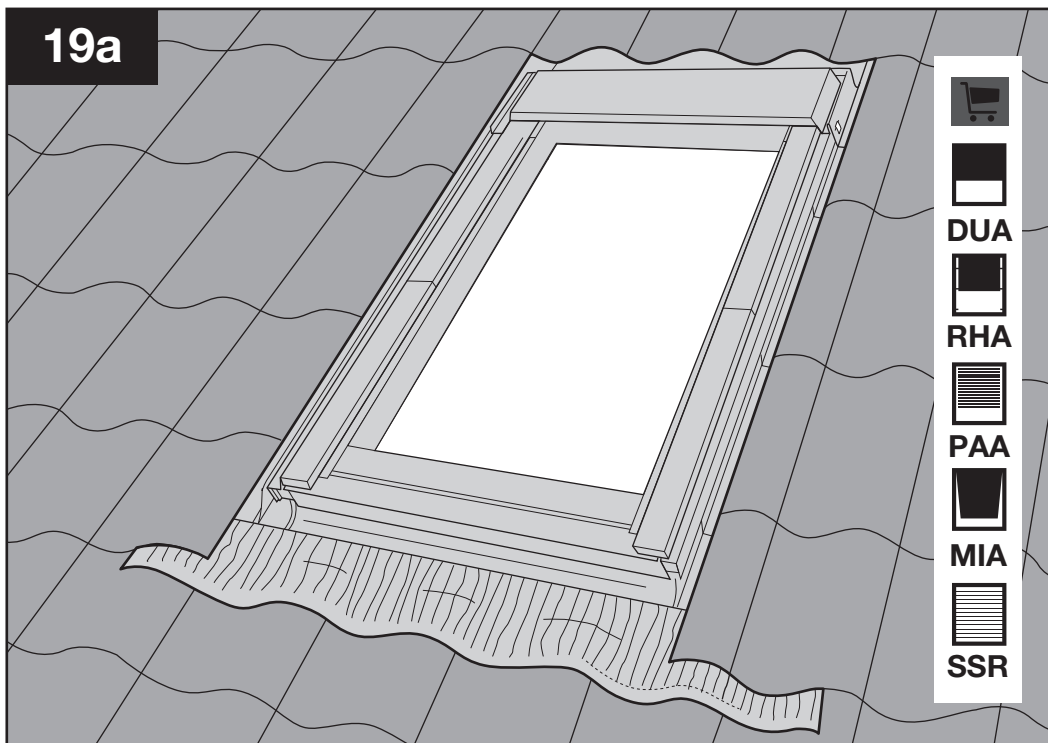
17a



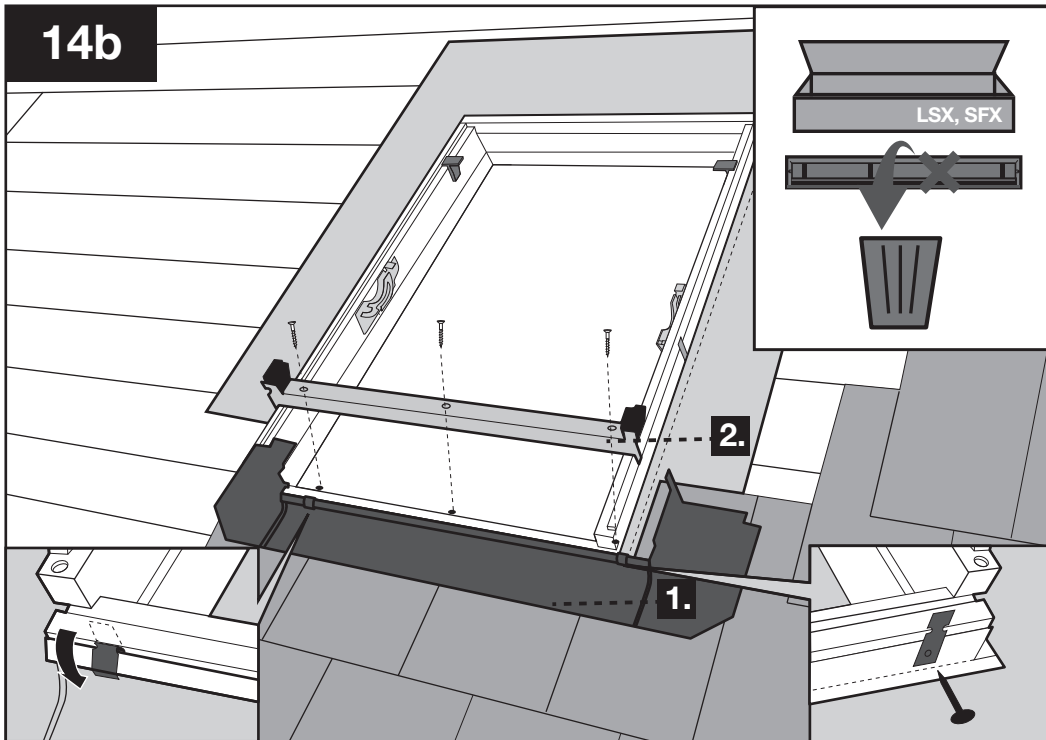
18a



19a

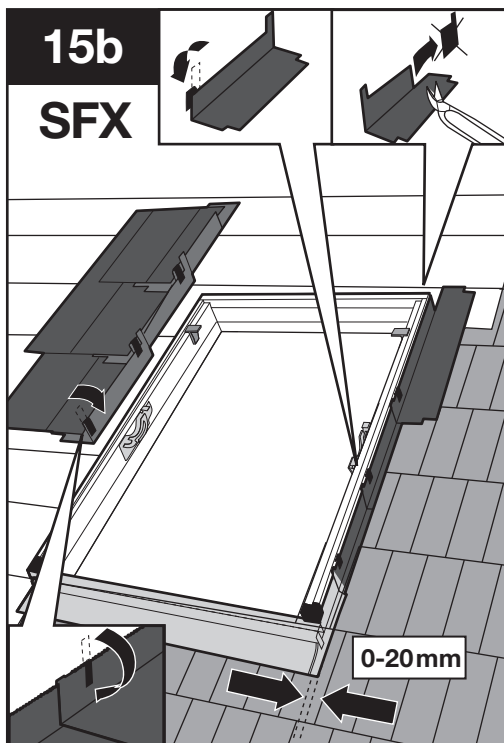


14b

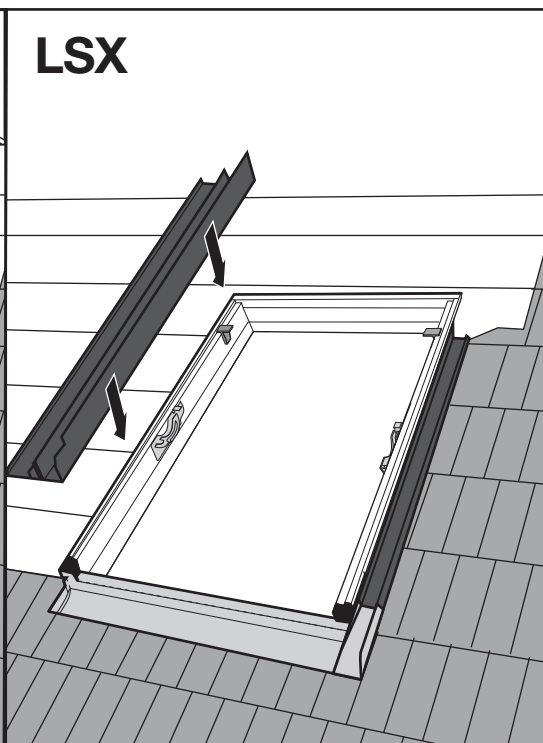


15b

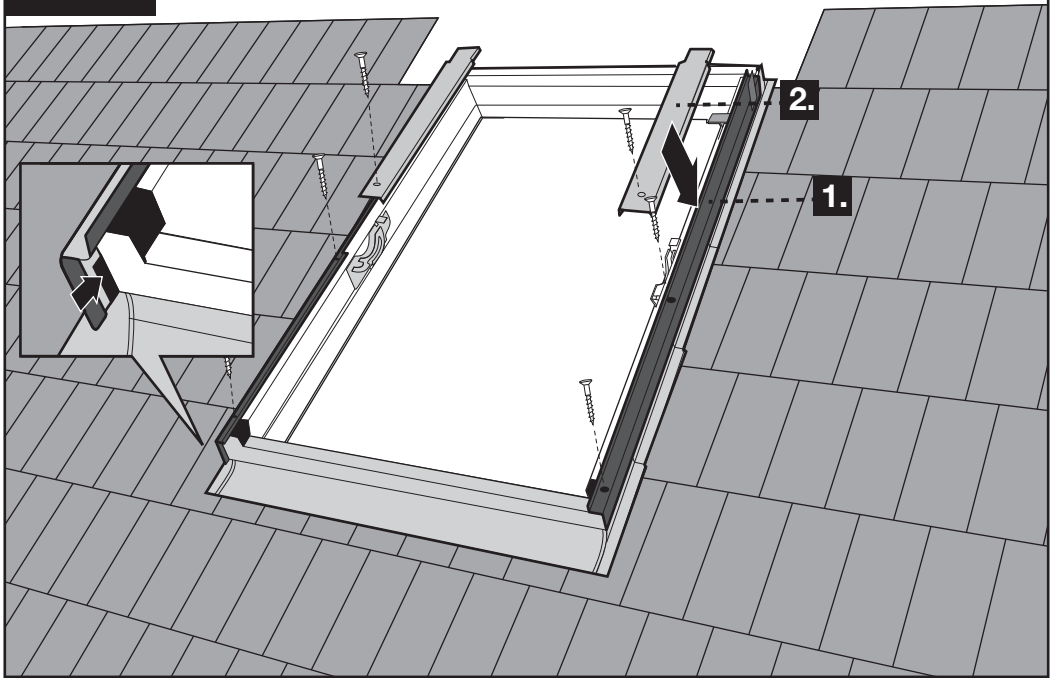
SFX



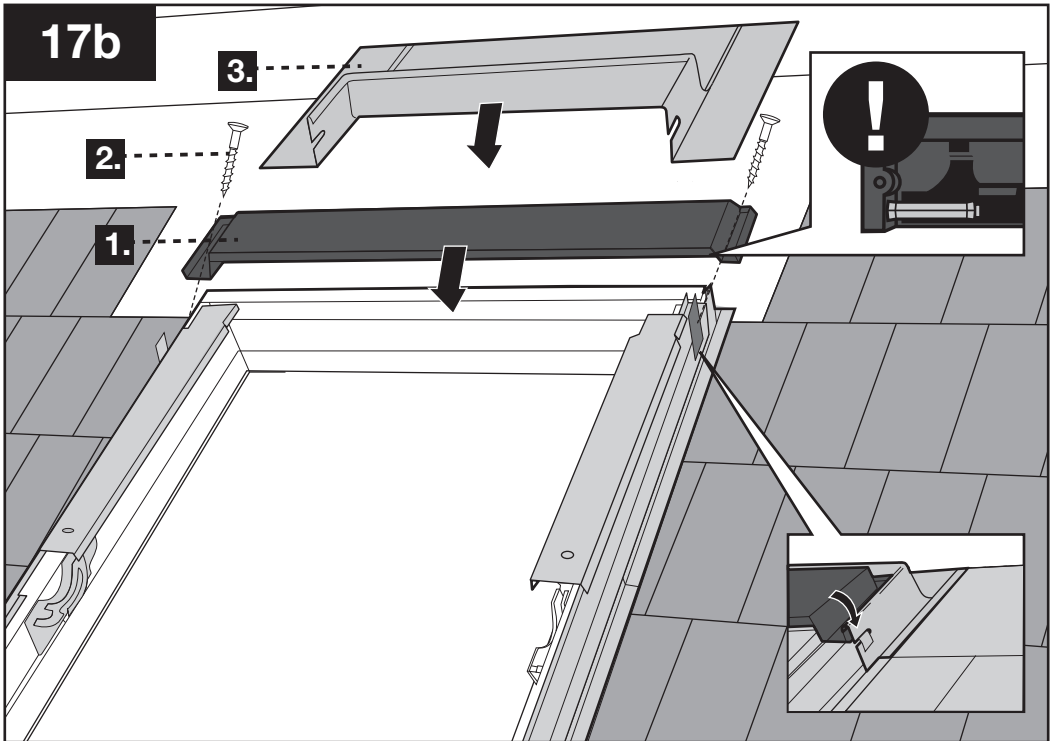
LSX



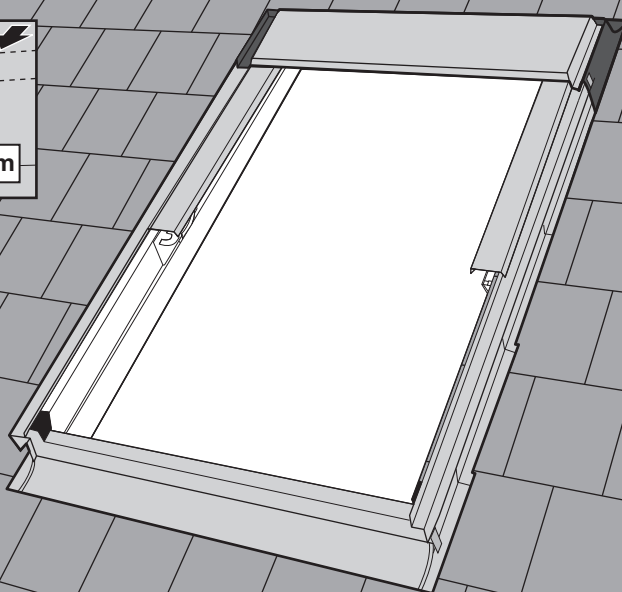
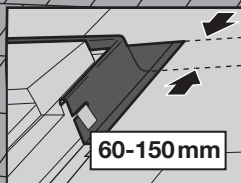
16b



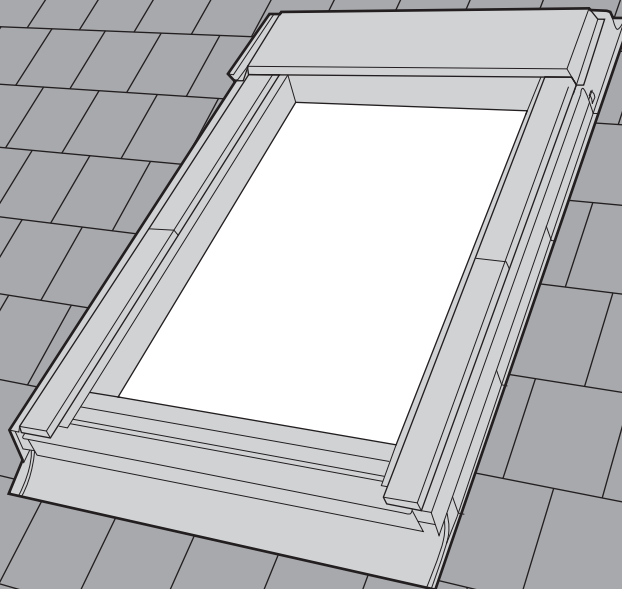
17b



18b



19b



DUA



RHA



PAA



MIA



SSR



**FCX** 15-90°

**FTX** 15-90°

**LSX** 15-90°

**SCX** 15-90°

**SFF** 20-90°

**SFX** 15-90°

**SSC** 15-90°

**SSX** 15\*-90°

**TFP** 25-90°

**TFX** 15-90°

**UBX** 15-90°

**UCX** 15-90°

**UFX** 15-90°

\*DK - SSC, SSX 25-90°